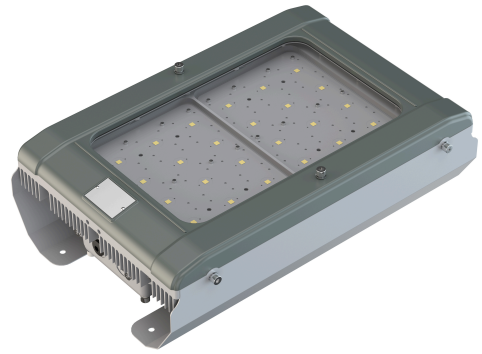


SPARTAN

BAY LIGHT



LED Zone 2 Bay Light

SPARTAN Bay Light luminaires are designed for hazardous environments which require high performance, high reliability, White-Light illumination. Specifically, the SPARTAN Bay Light is designed for use in very high area applications such as aircraft hangers or hazardous area warehouses. Installations that require high quantities of light from a powerful ceiling mounted solution.

Using Raytec's field-proven, long-life LED technology SPARTAN luminaires are ATEX and IEC Ex approved for all Zone 2 applications.

SPARTAN Bay Light luminaires have been designed with maintenance in mind. A unique modular design allows key components to be easily accessed and serviced if required, making inspection and maintenance quicker and easier. It also allows for the most flexible installation.

SPARTAN Bay Light luminaires are available in a range of different beam patterns, delivering the ultimate flexibility to specifiers, distributors and end users.

SPARTAN uses **COOLEXTRUDE™** thermal management technology, ensuring a much cooler LED operating temperature and up to 60% better heat dissipation compared to traditional lighting solutions, allowing the product to operate for > 10 years while still delivering a high lumen output of up to 25,000 lumens.

Key Features

- ATEX and IEC Ex – Zone 2
- Ultra long life LED
- High lumen output LED
- Easy installation, maintenance and inspection
- Extreme durability and toughness
- Wide operating temperature range of -50° to +50°C
- 0 - 10V Dimming as standard
- DALI Compatibility
- 5 year warranty

Why Raytec

- UK Designed & Manufactured
- Manufacturing precision engineered LED products
- Worldwide distributor support
- Lighting design and full technical support
- ISO9001 and ISO140001 accredited
- Award Winning Technology

Distributed by



Extended Features

Ultra-Powerful

High lumen output - up to 25,000 lumens
Latest high power LED technology

Ultra-Flexible

Range of beam patterns available
Operating temperature range of -50°C to + 50°C with a T4 rating for even the most challenging conditions

Ultra-Reliable

Industry leading 5 year warranty
Designed and manufactured in the UK to the highest standards including both ISO9001 & ISO14001
Advanced electronics and LED's protected by vibration resistant and water proof potting compound
Extreme durability and toughness

Ultra-Modular

Both the LED and PSU modules are easily accessible for maintenance and inspection

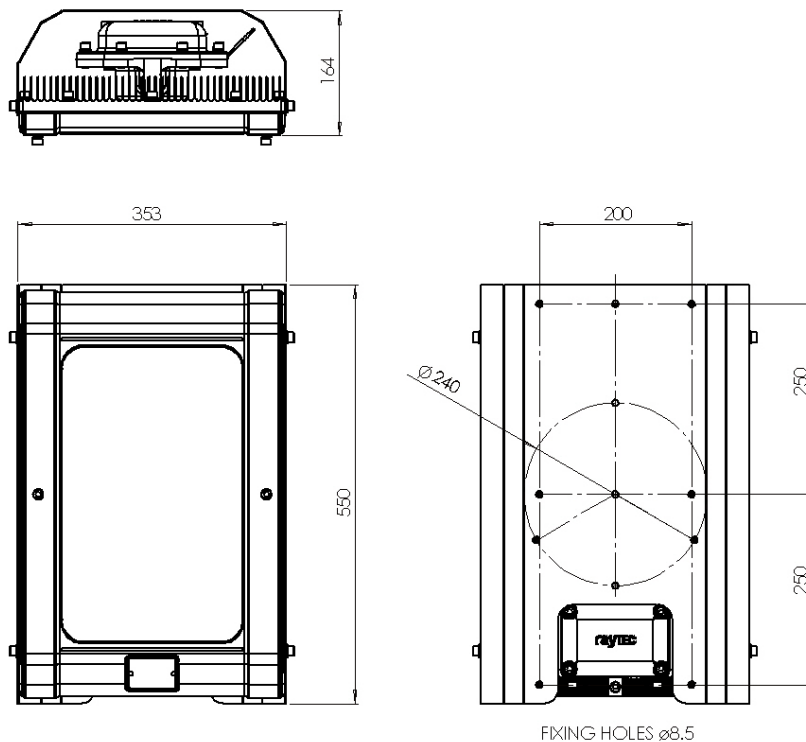
Ultra-Efficient

COOLEXTRUDE™ thermal management delivers class leading energy efficiency
Significant running and maintenance savings compared to traditional lighting technologies
SMART access wiring system for safe and efficient installation, set-up and ongoing inspection

Ultra-Support

Photometric files available (.ies & .ldt)
Full Lighting Design Service
Site specific Energy and Cost Saving Report available

Product Dimensions



Distributed by



rayTEC

Technical Specifications

Certification

ATEX Rating:	ATEX and IEC Ex rated for Gas and Dust
Hazardous Area rating:	Zone 2 – Gas and Dust
Certificates:	CML 17ATEX4149X AND IEC Ex CML 17.007 4X
Gas:	II 3 GD Ex ec nR op is IIC T4 G c -50°C TO +50°C
Dust:	Ex to op is IIIC T104°C Dc -50°C TO +50°C IP66 - M20 ENTRY - 150V TO 264V AC/DC

Electrical

Input:	110-254V 50/60Hz AC only
Power:	150-300W
Termination:	Incoming terminal block suitable for looping 4 core 4mm ² cable
Power Factor	> 0.95
Cable entries	2xM20 as standard (other entries available upon request), dispatched complete with one ATEX/ IEC Ex approved blanking plug

Optical

Beam Patterns-circular:	30°x 30° or 50°x 50° or 90°x 90°
Lumen output:	Up to 25,000 lm
LED type:	Platinum Elite SMT LEDs
Number of LEDs:	24
CRI:	70+
Colour Temperature:	6,000K+, 5,000K+ and 4,000K+

Mechanical/Environmental

Burning position:	Universal
IP rating:	IP66
Temperature range:	50°C to +50°C
Weight:	22.7kg (50lbs)
Enclosure:	Marine grade aluminium epoxy powder coated, toughened glass, all external fasteners and brackets are marine grade stainless steel
Unit Colour:	Grey (RAL 7012)
Installation instructions:	Please contact Raytec for copy
Dimensions:	550 x 353 x 164mm (21.7 x 13.9 x 6.5")
Mounting:	See dimension drawings on Page 2

Part Codes

(Select beam pattern below to replace 'XXXX')

Description

(T4 variants as standard)

SPZ-HPBY25K-W-XXXX	SPARTAN High Power Bay Light, Zone 2, White-Light
SPZ-HPBY20K-W-XXXX	SPARTAN High Power Bay Light, Zone 2, White-Light
SPZ-HPBY15K-W-XXXX	SPARTAN High Power Bay Light, Zone 2, White-Light
SPZ-HPBY10K-W-XXXX	SPARTAN High Power Bay Light, Zone 2, White-Light

Add -C1D2 to part code for North American standards

For options fitted with photocell add '-PC' to the above codes
For low voltage options add '-LV' to the above codes
Contact Raytec for T5 and T6 variants

Beam Patterns

Description

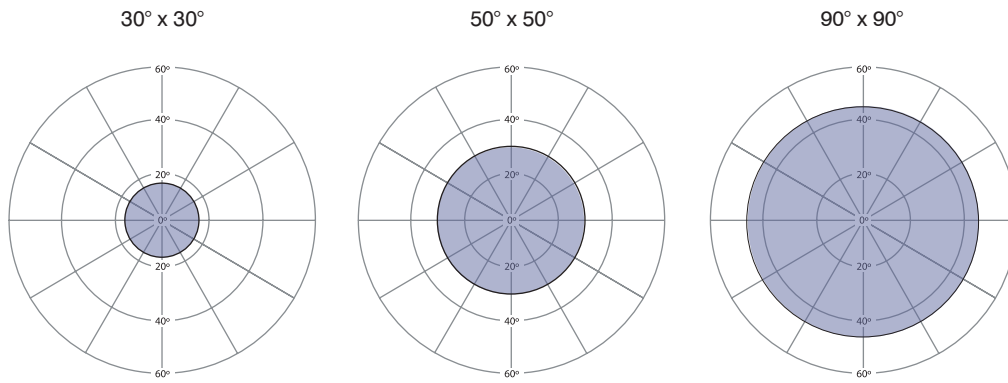
3030	Circular beam pattern, 30° x 30° beam
5050	Circular beam pattern, 50° x 50° beam
9090	Circular beam pattern, 90° x 90° beam

Distributed by



All Raytec luminaires are provided with an industry leading 5 year warranty and have an expected useful life in excess of 10 years

Beam patterns - Circular



Other Products in the SPARTAN Family

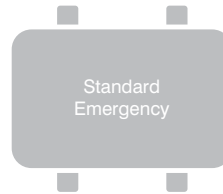
SPARTAN Flood 24



SPARTAN Flood 48



SPARTAN Bulkhead 24



SPARTAN Linear WL84
2 x 18W equivalent

SPARTAN Linear WL168
2 x 36W equivalent



Distributed by



TransNet NZ Limited
78 Cryers Road
East Tamaki,
Auckland, 2013
NEW ZEALAND

P: +64 9 274 3340
F: +64 9 274 5490
E: sales@transnet.co.nz
W: www.transnet.co.nz

rayTEC